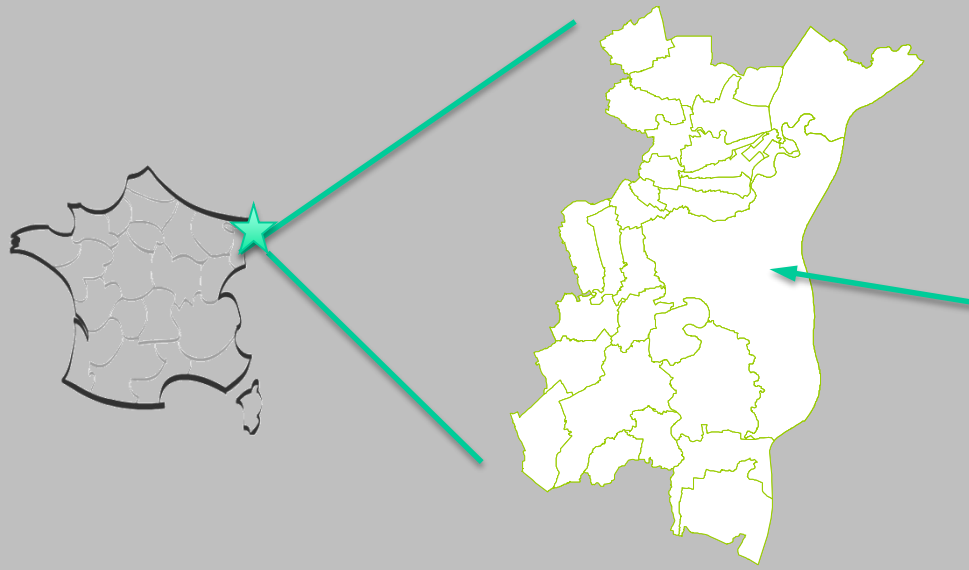




STRASBOURG

Green transition - Yves Zimmermann





- Eurometropolis of Strasbourg : 504,000 inhabitants / 33 municipalities
- City of Strasbourg : 276,000 inhabitants
- Capital of the Grand Est Region



On the border between France and Germany



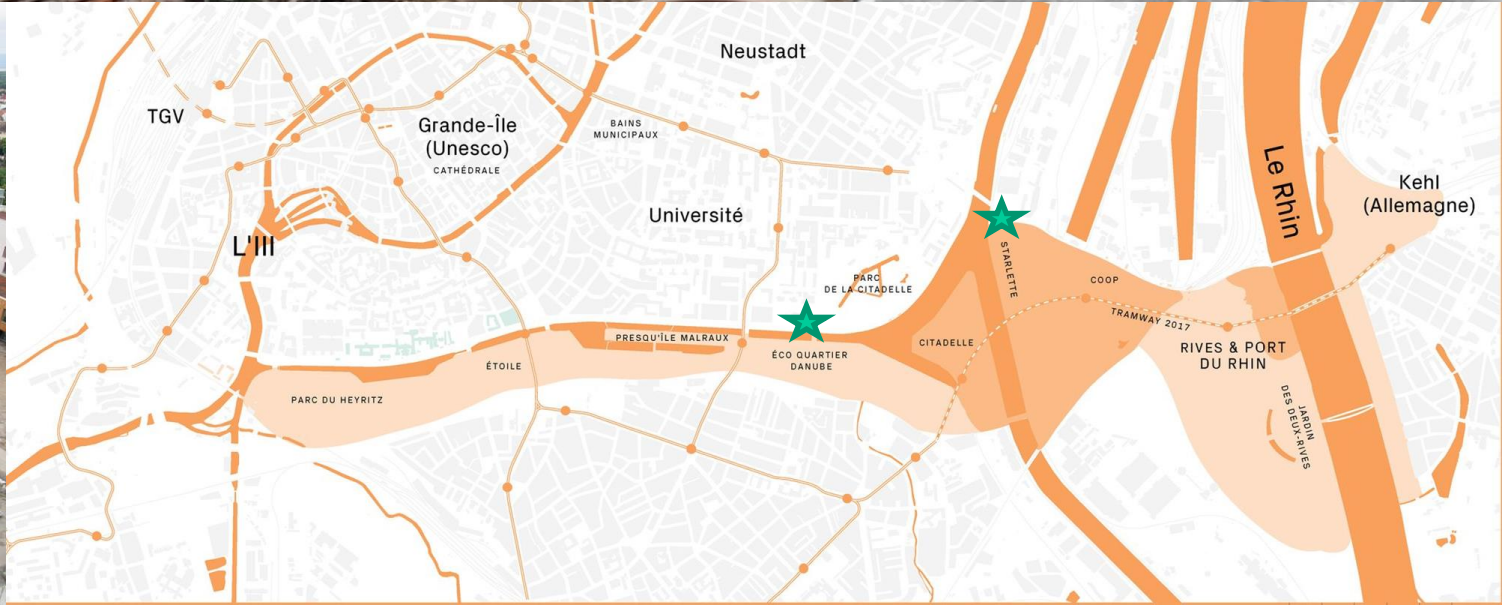
Home to the famous Notre Dame Cathedral and the Grande Île, both UNESCO World Heritage sites



Site of the European Parliament, the Council of Europe, and the European Court of Human Rights



Urban compacity, housing, mobility : green vs grey





PACTE :

Penser, Aménager et Construire en Transition Écologique Thinking, Planning and Building in Ecological Transition

Extending public action on ecological urbanism
Implementing the climate action plan 2030

Role of the PACTE

Co-produce

Common governance
Support

Cooperate

Increase competence, together



The EMS Climate Plan: 8 Objectives by 2030

Air

1.



Respect WHO air quality regulations.

Eliminate Fossil fuel usage in the territory's Low Emission Zone by 2030

Carbon

2.



Reduce GHG emissions by 40% by 2030.

Obtain true carbon neutrality and a 90% reduction in GHG by 2050.

Energy

3.



Reduce final consumption of energy by 30% (ref 2012).
Reduce energy consumption by 55% by 2050.

Renewable

4.



40% of final energy consumption produced by renewable sources.
100% renewable by 2050

Transport

5.



Limit the share of car transportation to 30%, reach 16% for bicycles, 37% by foot, and 17% for public transportation.

Renovate

6.



Renovate 8,000 homes per year be low-consumption, half of which must be low- income households.
Reduce consumptions in the tertiary sector by at least 40%

Water

7.



Strive to reduce water usage by 20%

Waste

8.



Half the tonnage of landfill trash (ref 2010)

154 SIGNATORIES

Penser, aménager et construire en transition énergétique

11 VILLES ET COMMUNAUTÉS DURABLES



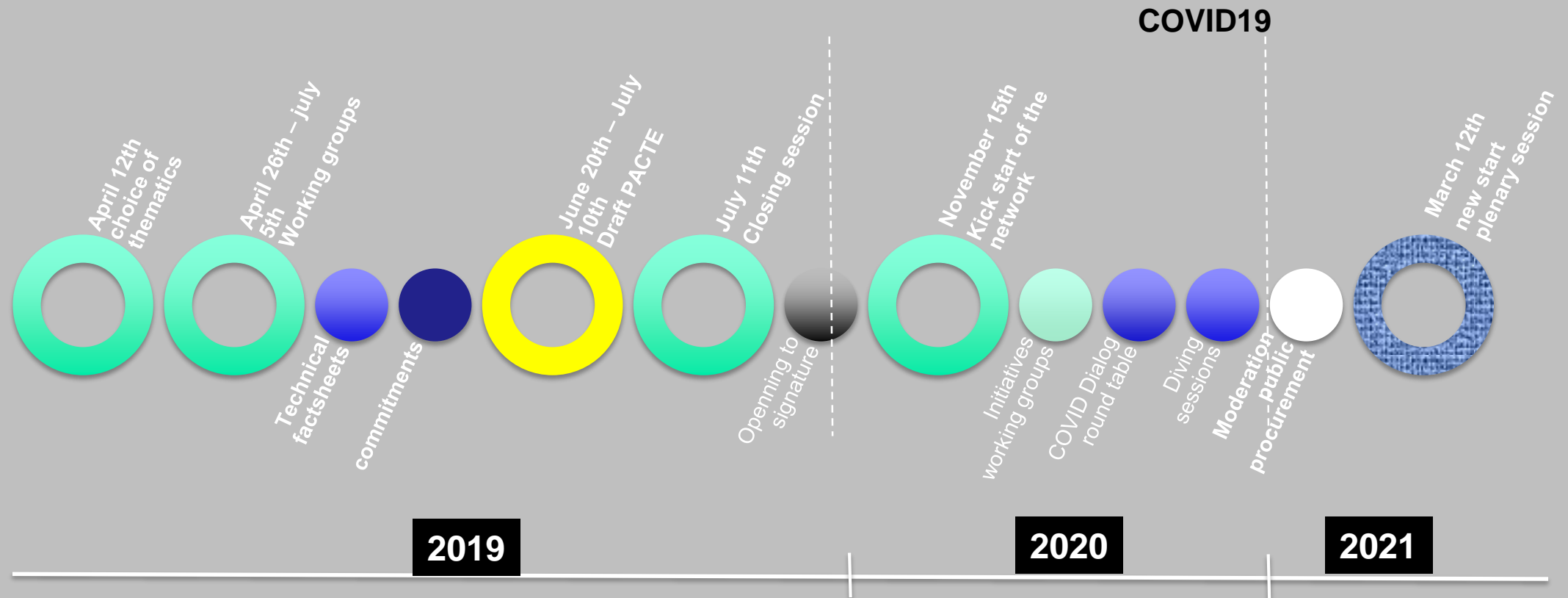
17 PARTENARIATS POUR LA RÉALISATION DES OBJECTIFS





Enterprises and associations	Interprofessional organisations	Quality building associations	Citizen	National administration	Local authorities	Real estate developers	Landlords	Urban developers	Design offices	Architects, planners, landscape designers		
<p>Material</p> <ul style="list-style-type: none"> BOMA Hunsinger SAS Mathis M.O.B Alsace Soprema Synergie bois local Wiedemann Wienerberger <p>Energy</p> <ul style="list-style-type: none"> Alter Alsace Energie Arkeale ES R-CUA R-GDS 	<p>Nature, agriculture</p> <ul style="list-style-type: none"> Alsace Nature GEPMO La Ligne Verte LPO MyFood Zero déchets Strasbourg <p>Mobility</p> <ul style="list-style-type: none"> ASTUS Citiz Freshmile Mobilex Parcus Strasbourg Mobilités 	<ul style="list-style-type: none"> FFB Fibois Grand-Est Pôle Fibre Energivie Pôle Hydreos 	<ul style="list-style-type: none"> Ecoquartier Strasbourg Horizome Métamine Youth for Climate Strasbourg 	<p>Higher education</p> <ul style="list-style-type: none"> ENSAS INSA - Strasbourg 	<ul style="list-style-type: none"> ADEUS Agence Régionale de Santé ATMO Grand-Est CERIB DREAL Grand-Est 	<ul style="list-style-type: none"> Eurométropole de Strasbourg Strasbourg Fegersheim Holtzheim Illkirch-Graffenstaden Kolbsheim La Wantzenau Mundolsheim Oberhausbergen Ostwald Plobsheim Reichstett Schiltigheim 	<ul style="list-style-type: none"> FPI 3B ADIM Est Alcys Altarea Cogedim Access Azur Home Boule Bouygues Immobilier Demathieu Bard Greenstone Groupe Duval Icade Joel Ohayon Linkcity 	<ul style="list-style-type: none"> Maisons Brand Marignan Nexity Immobilier Nexxt Immo Perspective Pierre & Territoires Provicis Alsace Promogim Spiral Spirit Immobilier Topaze Trianon résidences Unanim Vinci Immobilier Vivalys Groupe 	<ul style="list-style-type: none"> AREAL 3F Grand-Est Batigère CDC Habitat (NLE) CEGIP Foyer Moderne Schitigheim Habitat de l'III Habitation Moderne Néolia Ophea Vilogia <p>Syndics</p> <ul style="list-style-type: none"> CEGIP Synchro 	<ul style="list-style-type: none"> UNAM 3F Grand-Est Batigère CDC Habitat (NLE) CEGIP Foyer Moderne Schitigheim Habitat de l'III Habitation Moderne Néolia Ophea Vilogia 	<ul style="list-style-type: none"> Egis Elan Elithis Enerios Illios Imae Ingeneco Ingerop Lollier Ingénierie Sextant Ingénierie Solares Bauen Synrgetics 	<ul style="list-style-type: none"> AA+ AEA Architectes Associations des architectes pour la rénovation Atelier Mento BIK Architecture CROA DRLW Jérôme Vetter & associés K&+ Lucquet Architectes MW architectes La Como - Oziol Lama architectes Linder Paysage Natura concept Nunc OSAUPT Richter Th. Muller Paysage Urbitat +

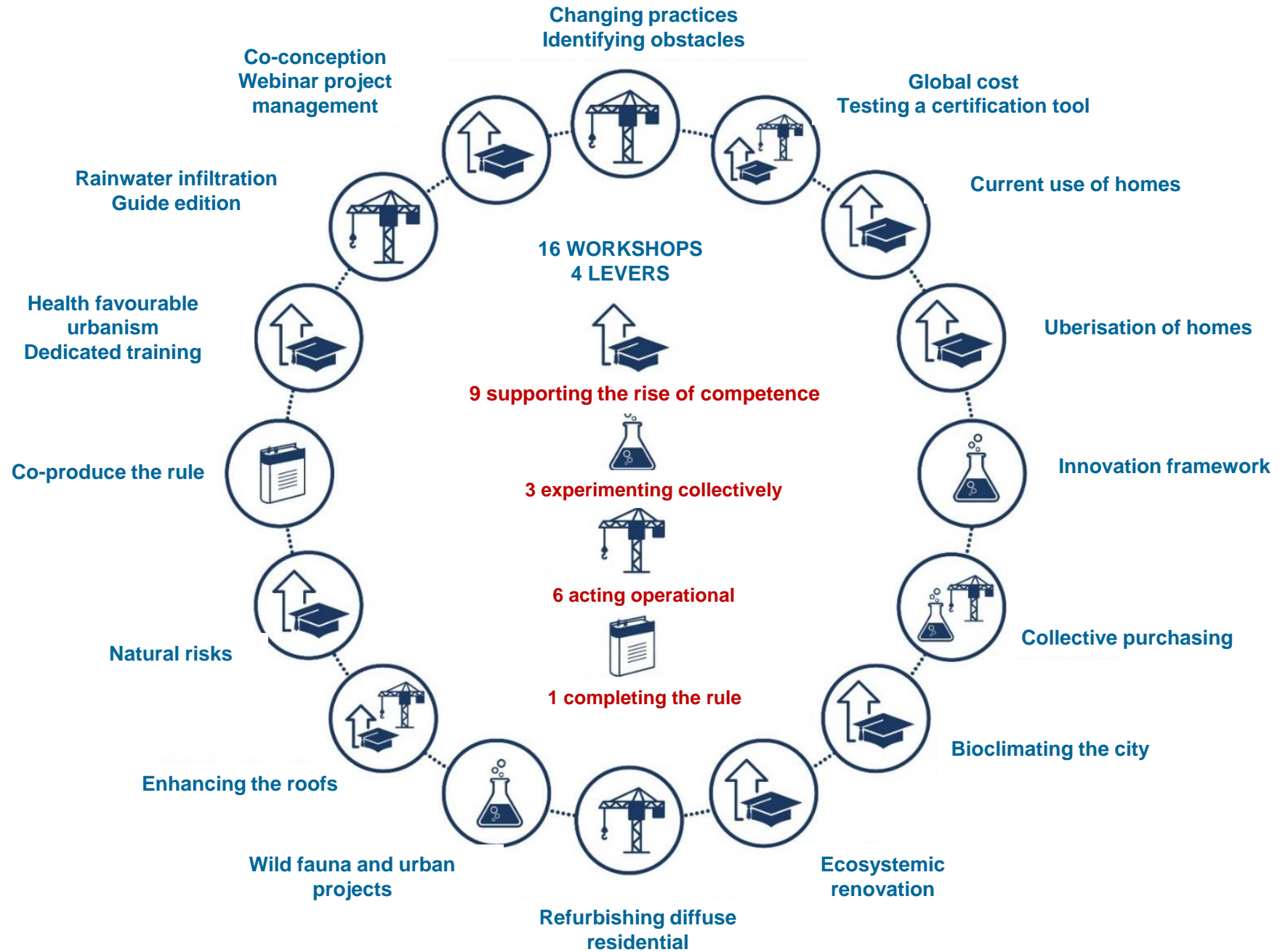
Timeline: from conception to network life



- 3 months to build a framework, the topics to be addressed and the working method
- 12 selected themes
- 70 co-produced commitments
- 16 self-managed workshops to define the level of commitments (2019 – 2020)
- 1 dedicated governance workshop



Workshops 2019-2020



14 Partners involved:

- 4 design offices,
- 3 energy suppliers (ES, R-cua, Enerios)
- 2 social landlords (Habitation Moderne, Ophéa),
- 3 real estate developers (Icade, Rive Gauche, Bouygues),
- 1 urban developer (CMFA...).
- 1 electro-mobility provider (Freshmile)
- Eurometropole : 6 experts – 3 departments

4 issues

Photo voltaic energy

Bioclimatic facades

Air quality

Electric charging stations

4 prescriptions

7 Watt peak / m² (Wp)

Differentiate the 4 facades

Double flow ventilation for most exposed flats

5% pre-equipped

It's creating a market !



« Rules of planification »
Mandatory

« Planning guidance »
Referral

100% renewables
Integrated territorial approach

Commitments
19 & 25

Consult the operators on the Air Climate
and Energy component of the
modification of the Local Planning Plan

Completing
the rule



Thank you

