

Prospective Visions for Greater Geneva

Inhabiting the city Landscape of the 21st Century

Dr. Panos Mantziaras

Director

Fondation Brillard Architectes

Prospective visions for Greater Geneva

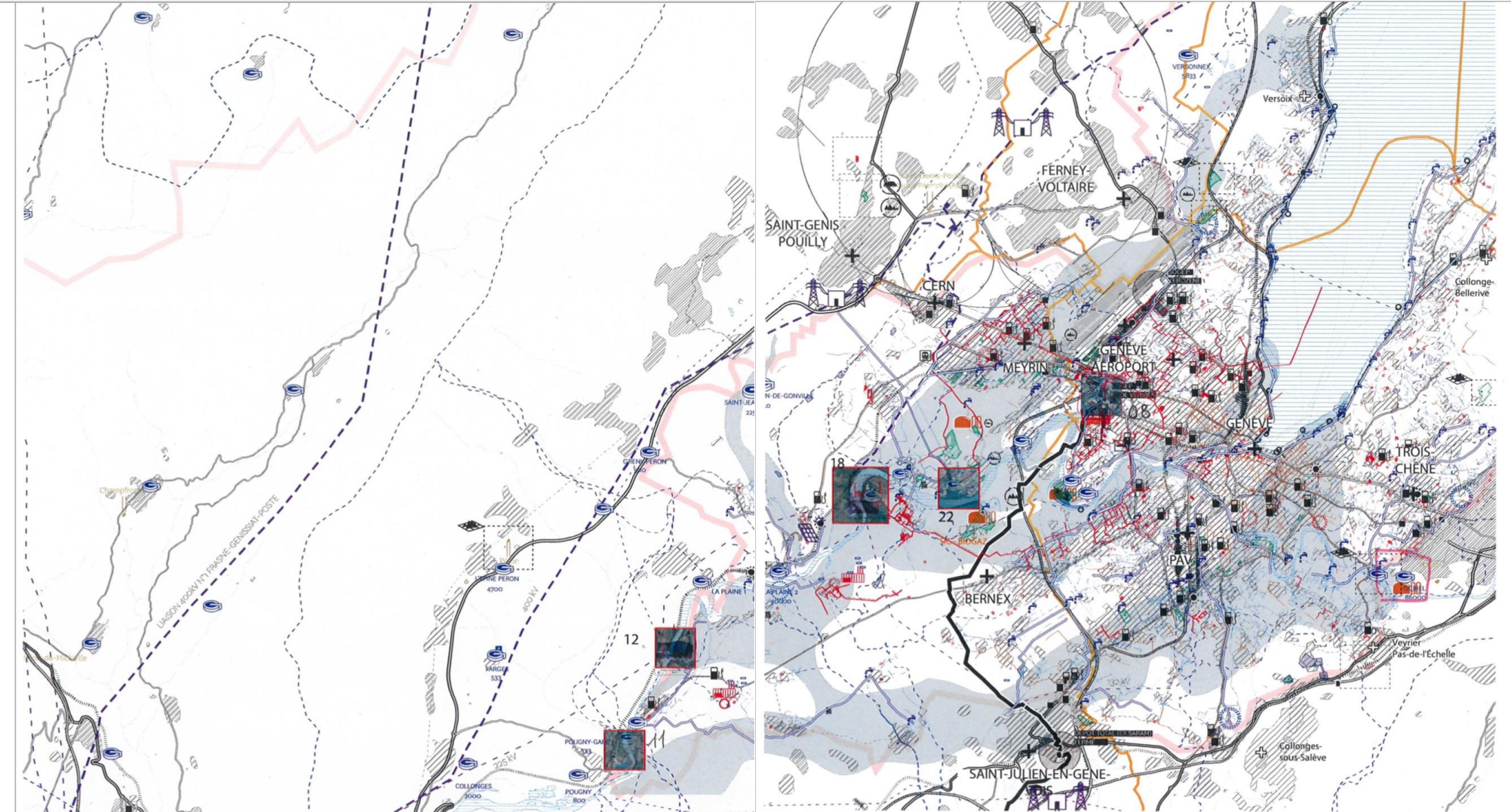
Inhabiting the City-Landscape of the 21st Century



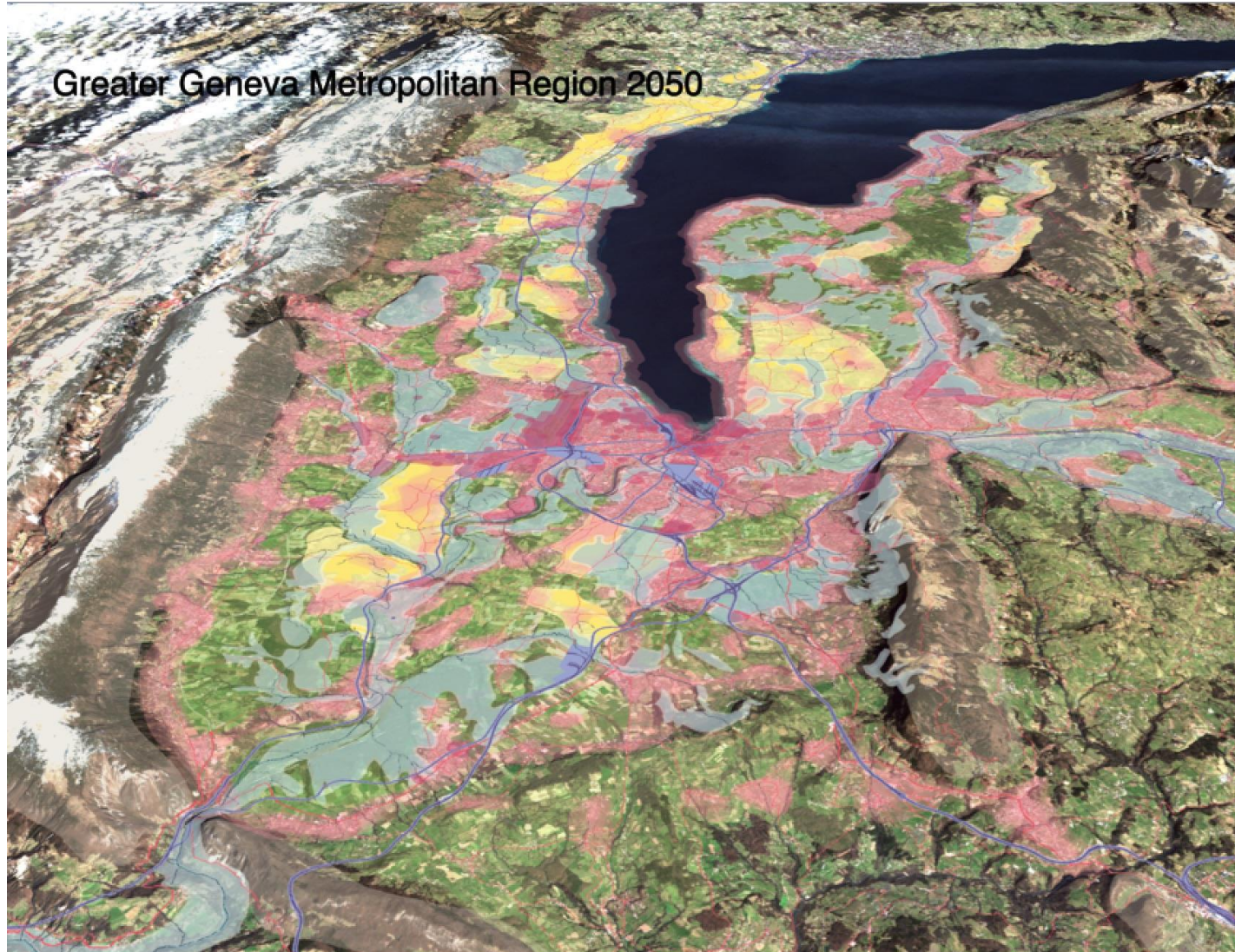
The Consultation themes

- — City and energy
 - What are the ways to reduce the overall consumption for 2050 ? What is the mix of energy and what are its uses ?
- — City and mobility
 - How can we reinvent space that is not constrained by individual mobility by inventing/recycling/adapting the urban forms of our present day ?
- — City and nature
 - How can we recreate the complex web of eco-systemic service provision for agriculture and biodiversity, public life and leisure, housing and economy?
- — City and society
 - What urban forms and quality of habitat, mix of public spaces, will correspond to the aspirations of resident populations, and to future changes or sociological evolutions

1. The Metabolism of the Invisibles (AWP)

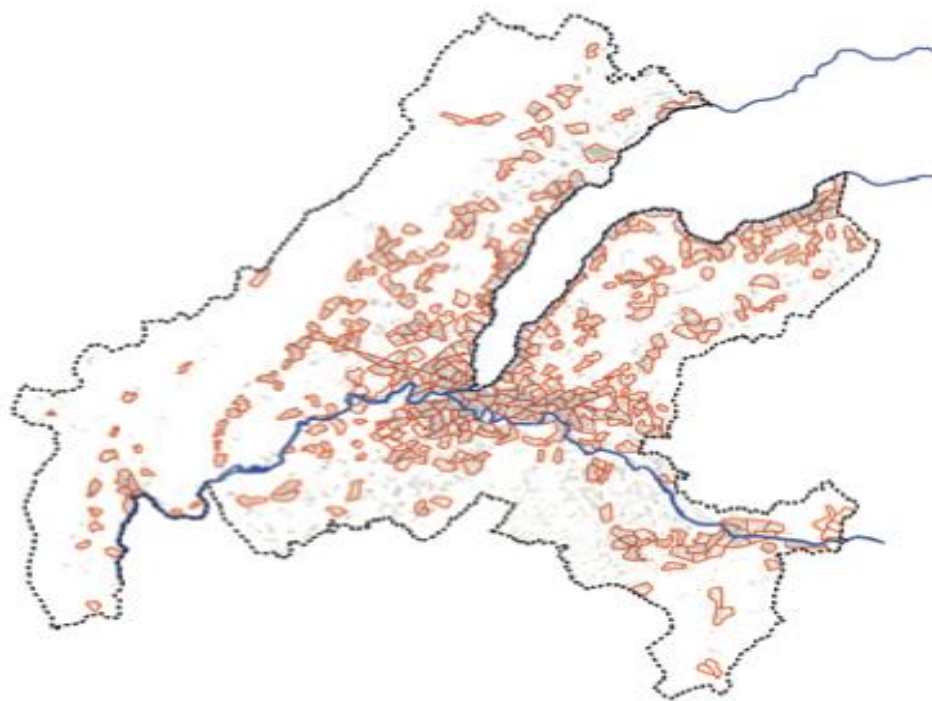


2. Greater Geneva and its Soil (ETH-UniLux)

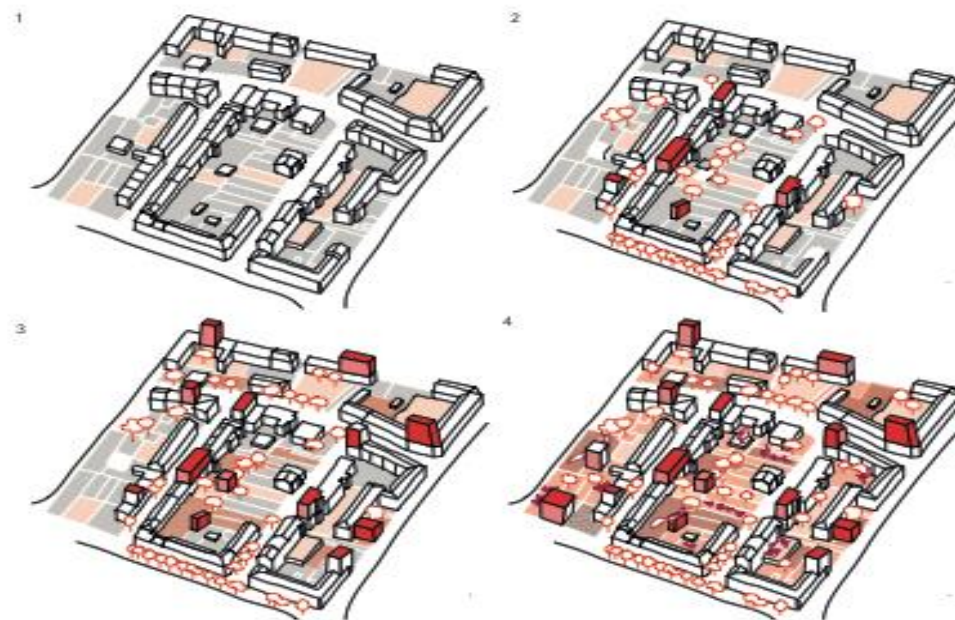


3. Resource Realms (Apaar)

ACTIONS À L'ÉCHELLE DES QUARTIERS

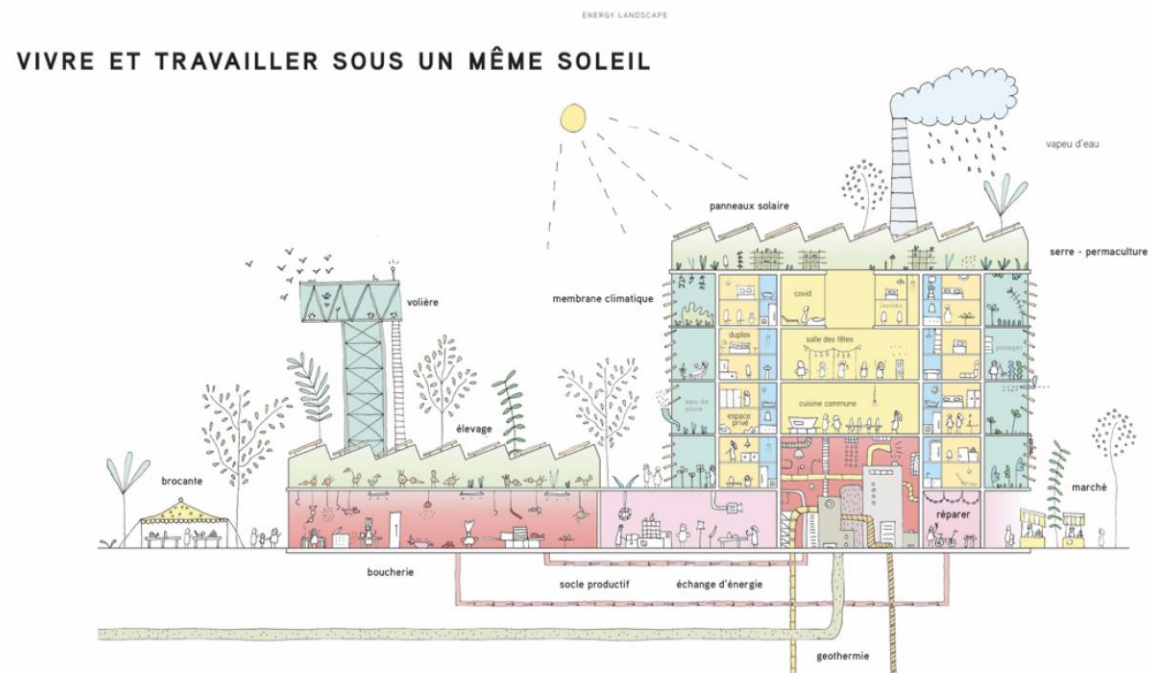


UNE ADAPTATION DES QUARTIERS EXISTANTS



- + QUARTIERS, HABITANTS
- + LIEN SOCIAL (PARTAGE, SYNERGIES)
- + RÉDUCTION PAR 3 DES CONSOMMATIONS (ÉNERGIE ET BIENS)
- + RÉSILIENCE FACE AU CLIMAT (VÉGÉTAL ET GESTION DES EAUX)

4. Energy Landscape (Raum 404)



Consultation sur le Grand Genève | 24 septembre 2020

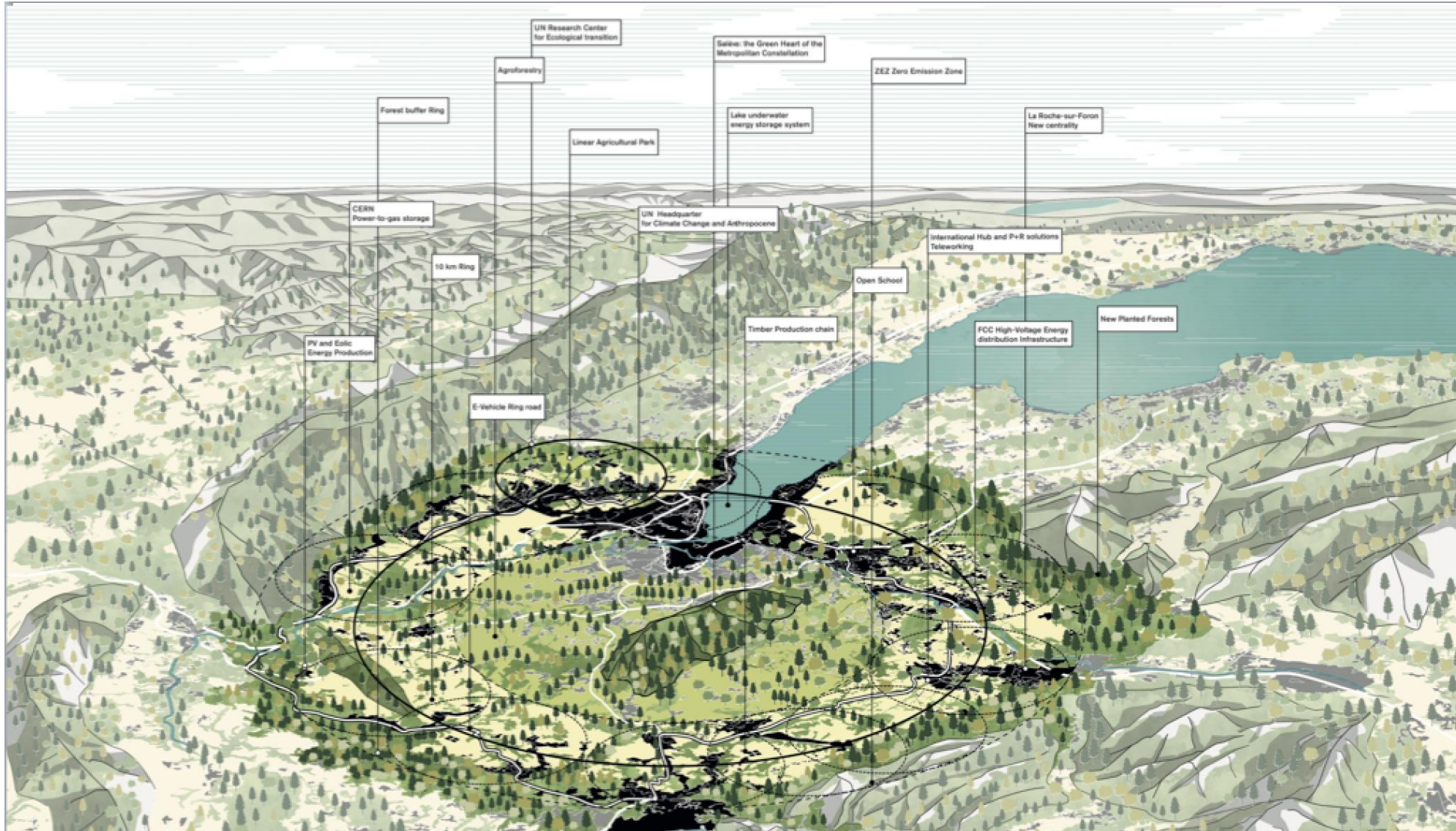
40



5. Soil and Work (Habitat Research Center-EPFL)



6. Greater Geneva Metropolis (Stefano Boeri Architetti)

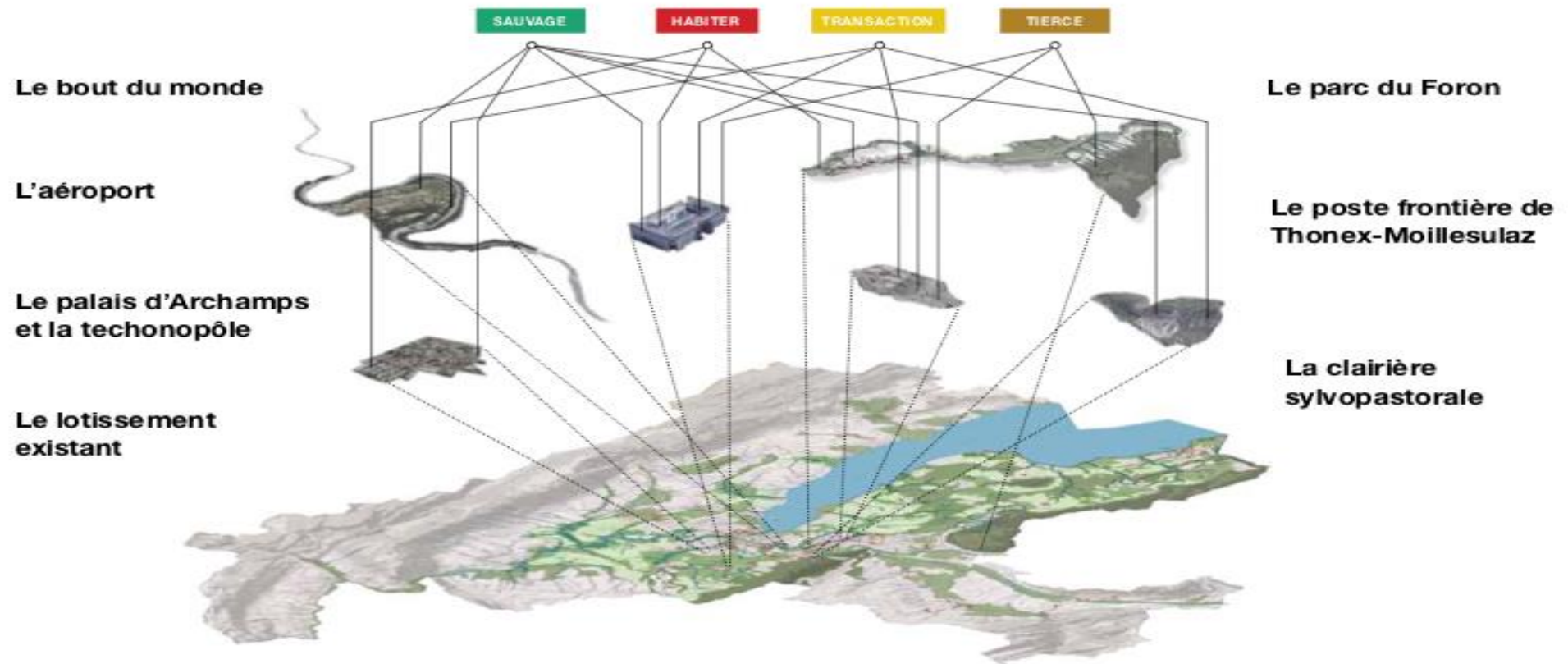


7. The Greater Geneva Crossing (Interland-Lyon)

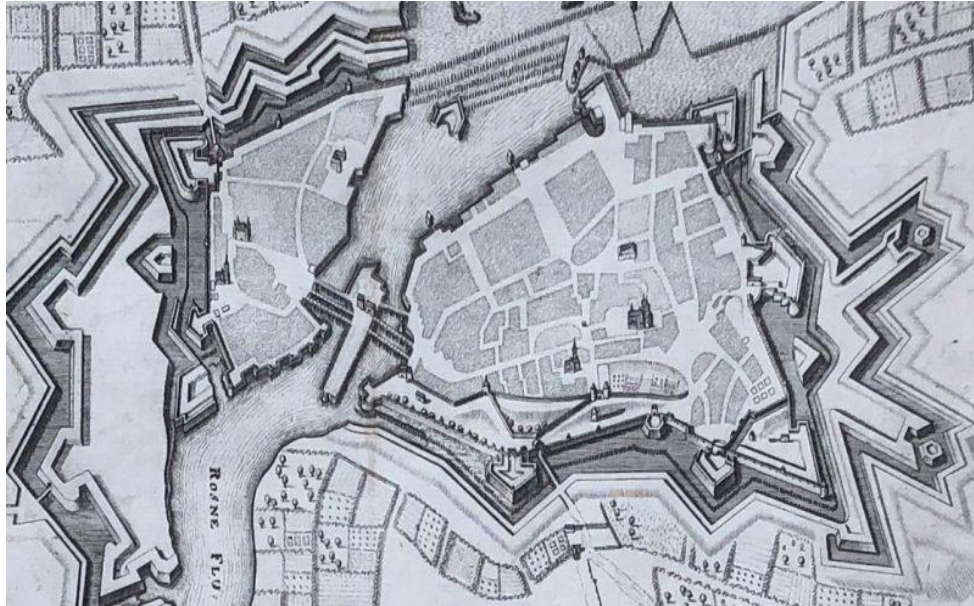
La grande traversée - INTERland / Contrepoint / Bazar Urbain / Coloco / Coopérative Equilibre / Ecole Urbaine de Lyon



Les situations de projet



The problem: what will be a city's future defense systems, against climate change? – Highest Percentage?



17th Century city view of Geneva on Lac Lemman in Switzerland (original antique copperplate print circa 1640)

CLIMATE DEFENSE POLICIES	City's PIB part %	Citizen's participation %	Coordination local authorities %
• Temperature moderation (trees-water-shades, etc.)			
• Water storage (reservoirs, ponds, lakes, etc.)			
• Energy production (PV, wind, geothermy, etc.)			
• Mobility systems (bikes, EV, routes, etc.)			
• Solidarity networks (associations)			
• Food production (urban agriculture)			
• Health (hospitals, elderly people's care centers, etc.)			
• Education (schools, professional education)			
• Bio-construction (new materials and construction methods)			
• Retrofitting buildings			
• Other			
TOTAL			

Thank for your attention

